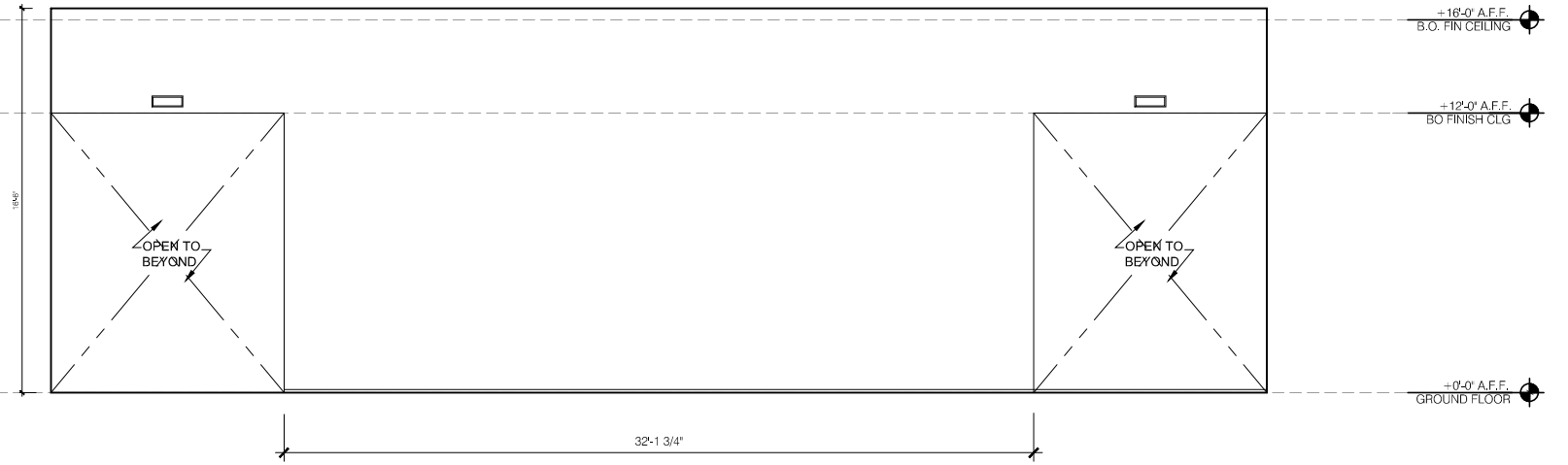
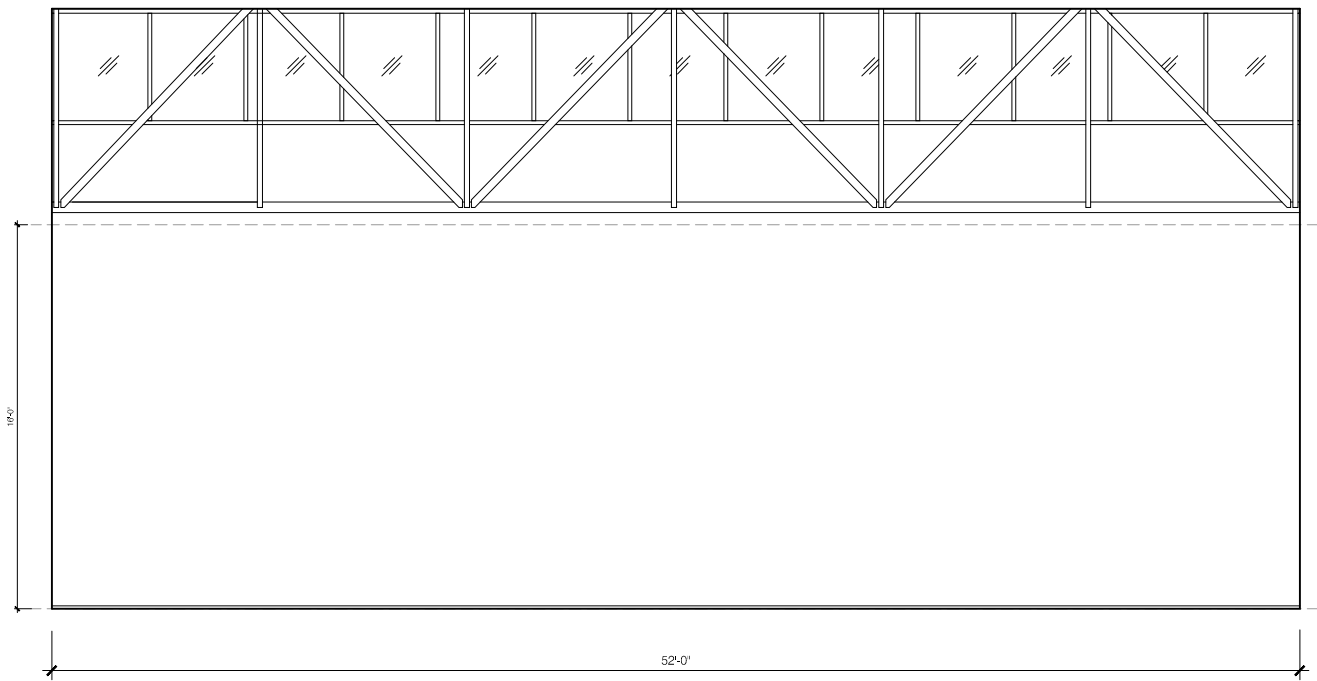


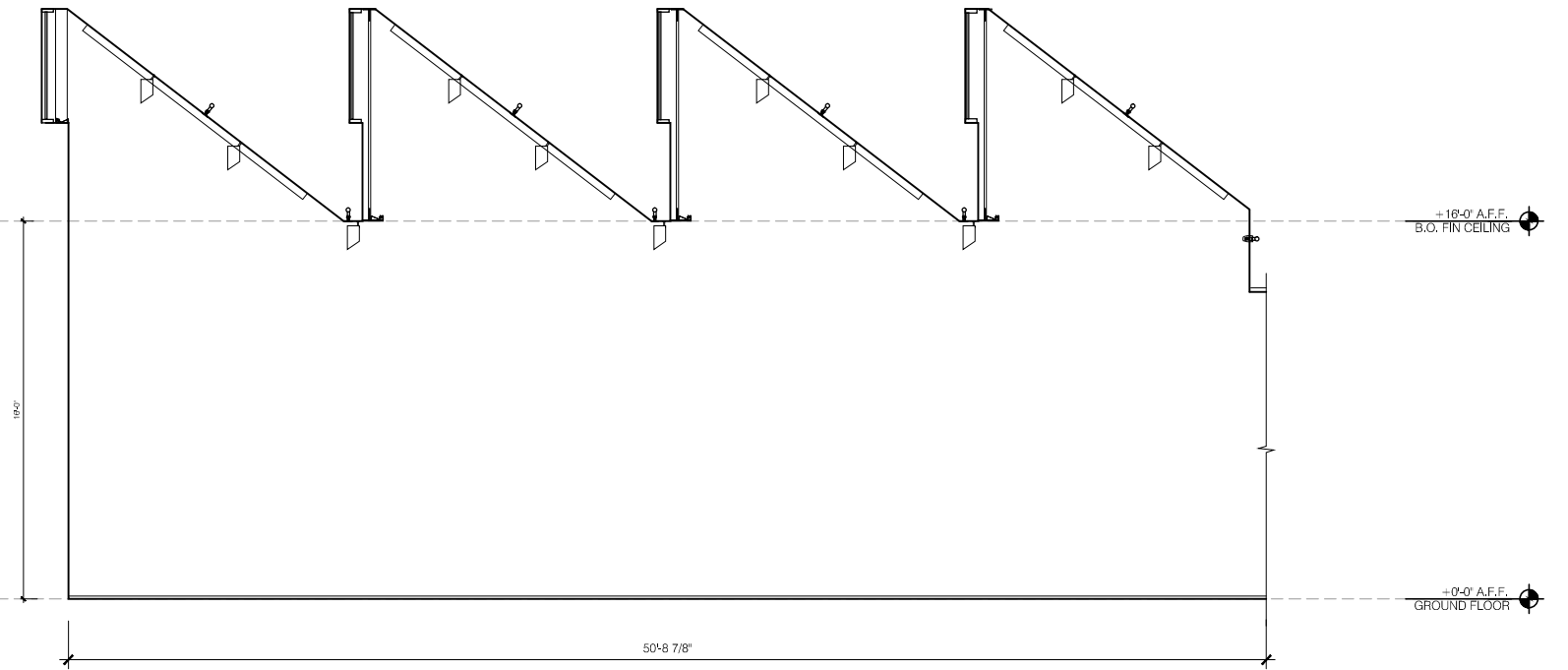
01 GALLERY 1 - WEST ELEVATION  
SCALE: 1/8" = 1'-0"



02 GALLERY 1 - SOUTH ELEVATION  
SCALE: 1/8" = 1'-0"



03 GALLERY 1 - NORTH ELEVATION  
SCALE: 1/8" = 1'-0"



04 GALLERY 1 - EAST ELEVATION  
SCALE: 1/8" = 1'-0"

+16'-0" A.F.F.  
B.O. FIN CEILING

+12'-0" A.F.F.  
B.O. FINISH CLG

+0'-0" A.F.F.  
GROUND FLOOR

+16'-0" A.F.F.  
B.O. FIN CEILING

+0'-0" A.F.F.  
GROUND FLOOR

